

# Werkstätten:Messe 2017

Exhibition of workshops for persons with disabilities  
and trade fair for vocational education

[werkstaettenmesse.de](http://werkstaettenmesse.de)



## Providing inspiration

29 March – 1 April 2017

Exhibition Centre Nuremberg



BAG WfbM

Bundesarbeitsgemeinschaft  
Werkstätten für behinderte Menschen e.V.

NÜRNBERG / MESSE



## Inspiration for more participation



The purpose of workshops is to enable people with disabilities to participate in the workforce. To this end they develop training and qualification opportunities at more than 2,700 locations, create interfaces and constantly identify new and individually tailored employment possibilities.

Every year at this event we experience how the workshops and their partners are constantly improving the opportunities for participation in the workforce for people with disabilities. The latest trends in the sector, sustainable products from workshops, a comprehensive professional development programme for skilled staff and a valuable networking and knowledge-sharing platform: Werkstätten:Messe 2017 is set to provide a wealth of inspiration.

**Martin Berg,**  
Chairman of BAG WfbM

# Four thematic streams – Four sources of inspiration – Four times the value

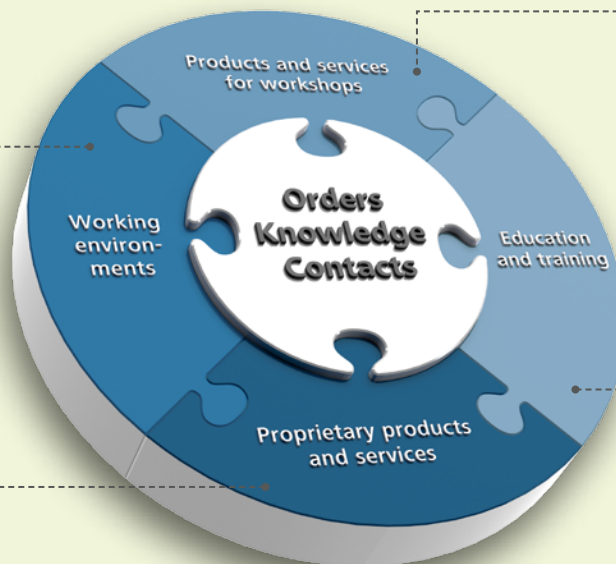
Your appearance at Werkstätten:Messe

## Enlightening Best Practice Examples

Show how workshops for people with disabilities can become valuable partners to businesses and municipalities – with examples from your day-to-day working practice.

## Sustainable business during and after the fair

Showcase your products and services effectively to existing and new customers.



## Valuable contacts and inspiration

Meet with experts from the sector to discuss solutions for establishing and developing production and administration.

## Forward-looking perspectives

Present your concepts for vocational training and benefit from sharing experiences with experts.

For details of the products and services on display please go to:

[werkstaettenmesse.de/application](http://werkstaettenmesse.de/application)

## Supporting programme: make the best impression on your target group



- **Product presentation programme:** highlight your expertise with a practice-related presentation to social enterprises
- **Career forum:** present your valuable training opportunities for people with and without disabilities
- **Experience world:** bring your workshop environment to life for business customers and end users
- **Art gallery:** present your creative masterpieces on our free display area
- **Rhineland-Palatinate in the spotlight:** become part of an informative knowledge-sharing community and effective network



# The new concept for Werkstätten:Messe

An added weekday brings you even closer to your target group

**NEW!**

Specialist presentations on focus topics

**Programme highlights**

**NEW!**

Focus topic vocational training

Wednesday <i>NEW!</i>	Thursday	Friday	Saturday
Industry gathering for workshops	Industry gathering for workshops	Professional buyers' day	General public day
Specialist presentations focusing on employees/workshop councils	Specialist presentations focusing on the workshop environment	Specialist presentations focusing on purchasers and procurement	Specialist presentations focusing on access to the workforce for people with disabilities
Specialist presentation programme of BAG WfbM			
Opening event, award of "exzellent"-prize, press conference	Socio-political event	Trade fair meeting for exhibitors	Interactive display area for end users
Presentations on education and training Career Forum	Presentations on education and training Career Forum		

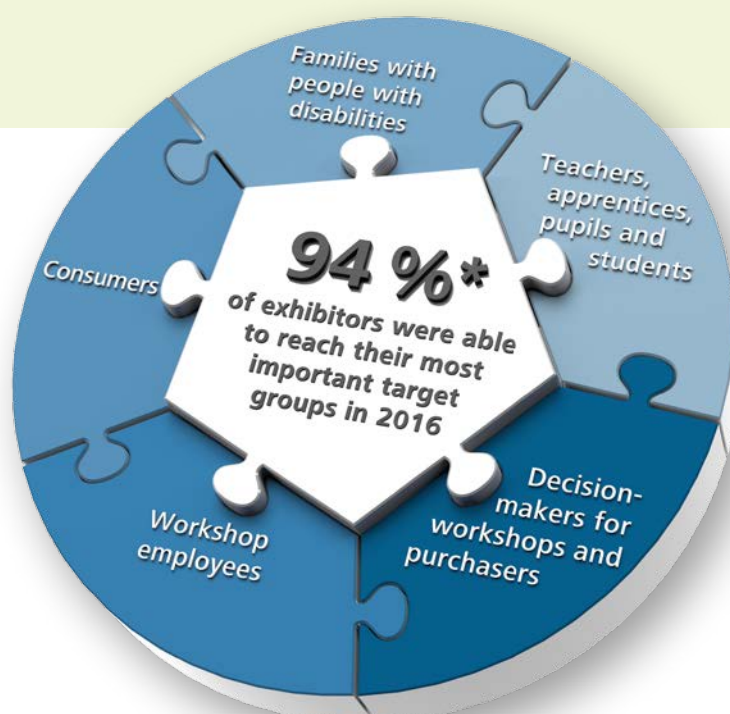
## How you benefit

- Exhibition clearly structured into thematic streams attracts visitors interested in specific areas and lets you reach your target group faster.
- More scope to cover vocational training, the key topic for the sector.  
As a result, all players can provide impetus to this ground-breaking issue.
- Concentration of industry expertise thanks to shorter opening hours 9:00 – 17:00

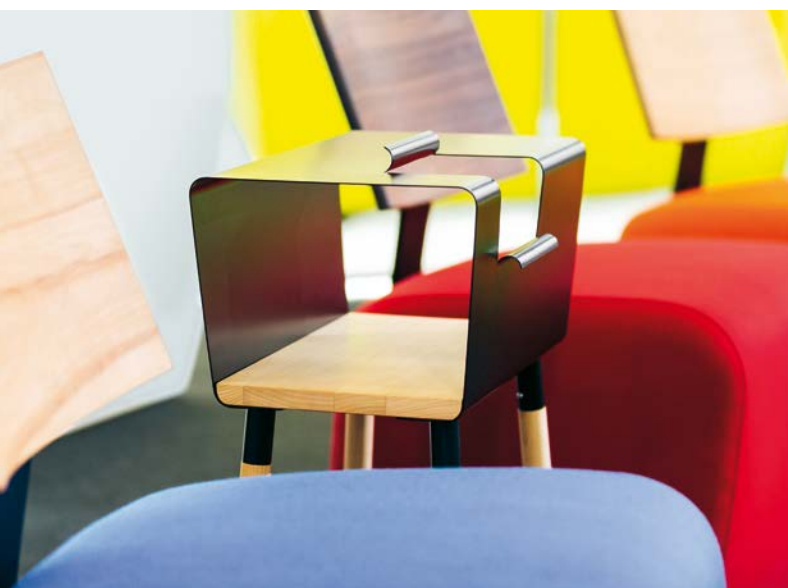
## Become an exhibitor and part of the social economy network now

Book your stand and secure your early bird discount by registering before **27.9.2016** at:

[werkstaettenmesse.de/application](http://werkstaettenmesse.de/application)



\* Source: Exhibitor poll 2016



Photos, exhibitor feedback and event analysis 2016:  
[werkstaettenmesse.de/application](http://werkstaettenmesse.de/application)

# We are happy to advise you

werkstaettenmesse@nuernbergmesse.de  
 T +49 9 11 86 06 - 87 72  
 F +49 9 11 86 06 - 12 00 76



**Leander Krummrich**



**Tamina Klinger**



**Sandra Pews**

## Venue

Exhibition Centre Nuremberg  
NCC West, hall 12

## Dates

Wed. 29 March – Sat. 1 April 2017

## Accommodations in Nuremberg

PartnerHotels NürnbergMesse  
Christina Kleinschek  
T +49 9 11 86 06-80 20  
[hotels@nuernbergmesse.de](mailto:hotels@nuernbergmesse.de)  
[werkstaettenmesse.de/hotels](http://werkstaettenmesse.de/hotels)

## Honorary sponsor

BAG WfbM  
Sonnemannstrasse 5  
60314 Frankfurt am Main  
Germany  
[bagwfbm.de](http://bagwfbm.de)

## Organizer

NürnbergMesse GmbH  
Messezentrum  
90471 Nuremberg  
Germany  
[nuernbergmesse.de/en](http://nuernbergmesse.de/en)

## Partner



Bayerisches Staatsministerium für  
Arbeit und Soziales, Familie und Integration



Diakonie  
Neuendettelsau



NÜRNBERG



ZBFS

[werkstaettenmesse.de](http://werkstaettenmesse.de)

